



**Everything you need to run  
and grow your business**

# Why AutoCount?

For years, Autocount team have been working hard to build the brand and reputation, maintains high level of product quality and customer satisfaction.

**25 Years of Experience** - In matured software development, meeting requirements, fulfilling and improvising.

**Affordability, Flexibility & Extensibility** - High quality product with low pricing. You may start with basic package and later extant to upgrade/add-on when business grows.

**Guaranteed Customer Support** - All customers and dealers are backup by dedicated team of technical support from the principal.

**Extensive Service Network** - 300 trained and experienced authorized dealers to provide excellent service and support.

**Continuous Development** - Established developer with ambitious missions. Products will be updated/upgraded to meet latest requirements and trends.

**Advanced Technologies** - Adopts popular and advanced technologies to ensure the strength of platforms for long-term development.

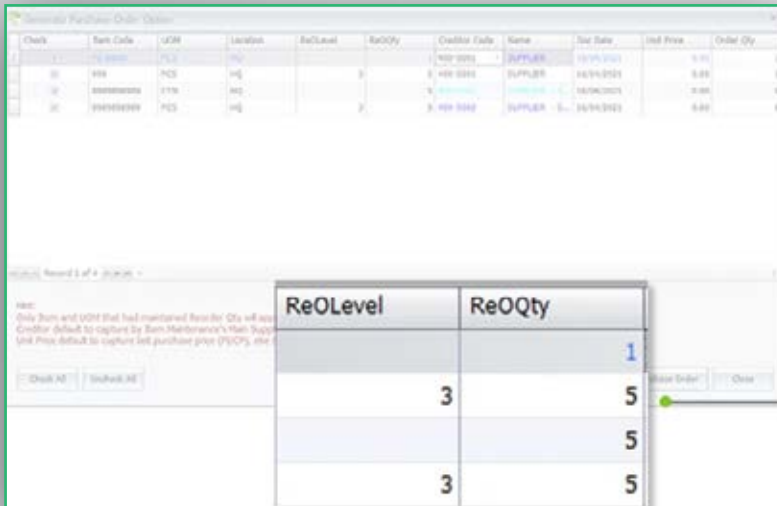


# EFFORTLESS Productivity

Create as many templates as you need for frequently used documents, and schedule all recurring transactions for future periods. Improve productivity and efficiency in daily routines with a few simple actions.

**Schedule Your Recurring Entries** - For many businesses, recurring transactions and accounting entries can be a huge volume of repetitive and tedious workload. Now you may schedule all future transactions and decide either to generate the entries automatically or to be prompted with reminders.

**Use of Document Templates** - Create a template for a frequently used document (e.g. Cash Sale) and enjoy SPEEDY processes in the subsequent billings. Imagine how much time you can save on documents such as Quotation, Sales Order, Invoice, Credit Note, Request Quotation, Cash Sale...



Item Code UOM Location ReLevel ReQty Credit Code Name Tax Rate Unit Price Order Qty

Item Code	UOM	Location	ReLevel	ReQty	Credit Code	Name	Tax Rate	Unit Price	Order Qty
000000000	PCS	WH			1 400 0000	SUPPLIER	10/10/2021	0.00	
000000000	PCS	WH			2 400 0000	SUPPLIER	10/10/2021	0.00	
000000000	PCS	WH			3 400 0000	SUPPLIER	10/10/2021	0.00	

ReOLevel ReOQty

	1
3	5
	5
3	5

**Generate PO from Reorder Advice** - Stock replenishment can now be easier and quicker. Browse the Reorder Advice anytime, make decision from the listed/proposed items and quantity to be purchased, then straight away Generate Purchase Orders immediately to your suppliers. Increase the stock reorder efficiency by at least 80%.

**Send Documents/Location via WhatsApp**

Sending documents/reports/location made easy with WhatsApp. Just maintain the recipient's WhatsApp contact number, key in the message, and Send it. The recipient shall receive the message and download link via WhatsApp immediately.

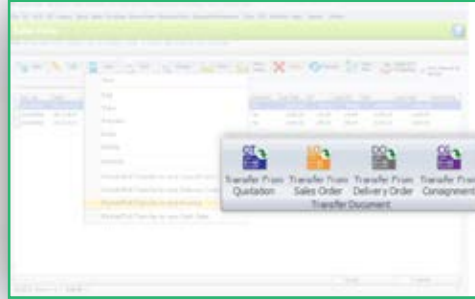


## INTERNET USER

Working from home is part of the new normal. With Internet Login, account books database installed on office server can be accessed anytime while staying at home, via internet connection.

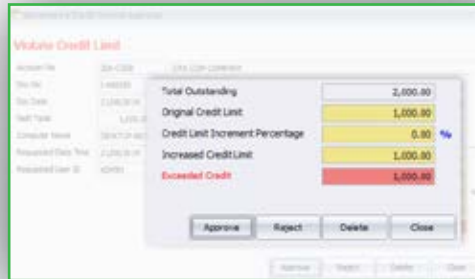
## TRANSFER OF DOCUMENTS

When creating a new document using Transfer method, you can choose to use either 'Transfer To' a new document from an existing document, or 'Transfer From' an existing document to a new document, whichever works better for you.



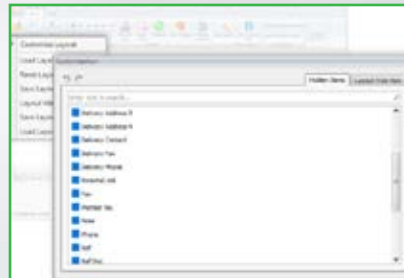
## EASY CREDIT CONTROL

Any creation of documents that violating credit limit will send a prompt directly to your screen and requesting your approval to proceed. It is convenient and it is effective.



## DEFINE YOUR OWN LAYOUT

This is a practically useful minor customization many may need for their own purpose. When creating transaction for sales, purchases and inventory, your own defined additional fields allows you to input desired info/data.



# IT FLOWS BETTER

This version also emphasizes on better flows of recording, transaction and tracking. Special highlights are the process of consignment, deposit, purchasing, and related documents flow.

## CONSIGNMENT

**Refined Consignment Module** - You may be consignor, or consignee, the most important things you need from the software is a good flow of consignment activity records and reports. It covers from the beginning of consignment note, to the transfer of consignment return of invoice, and status of inventory reports.



## DEPOSIT

**Deposit - Apply, Refund & Forfeit** - If you do collect deposits from customers, you will better appreciate the features deposit management. It allows you to record each deposit received, transfer of deposit (as payment) to offset invoices, and multiple entries for refunds and forfeits.





## PURCHASE

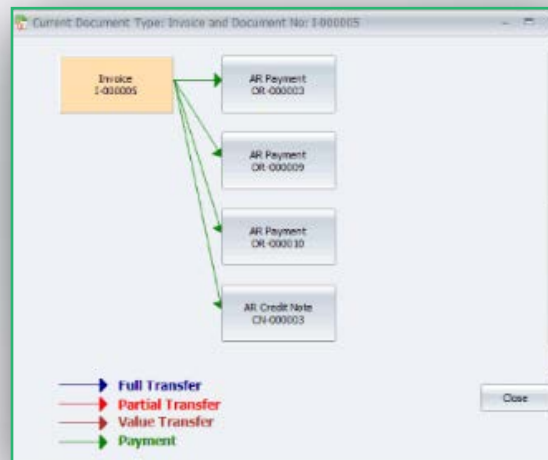
**New Document - Purchase Request** - Purchase Request is more to a internal document in procurement process, usually used before Request Quotation and Purchase Order are sent to suppliers.

Requested By: MR.PETER	Purchase Request No: <<Item>>			
Description: PURCHASE REQUEST	Date: 21/08/2019			
Purchase Location: HQ	Approval User:			
Bar Code:				
Item Code	Description	Location	UOM	Qty
CH00001	CANON COPPER MACHINE 01	HQ	UNIT	10
FG00001	FINISHED GOODS 01	HQ	UNIT	10
FG00002	FINISHED GOODS 02	HQ	UNIT	10
FG00003	FINISHED GOODS 03	HQ	UNIT	10
RW00001	RAW 01	HQ	KG	10

## FLOW

### The Flow of Related Documents

In one screen you can view the complete flow of related documents. From the beginning of non-accounting documents, to official business billing and related payments or credit notes. Besides, you may click on any document and drill into its details.



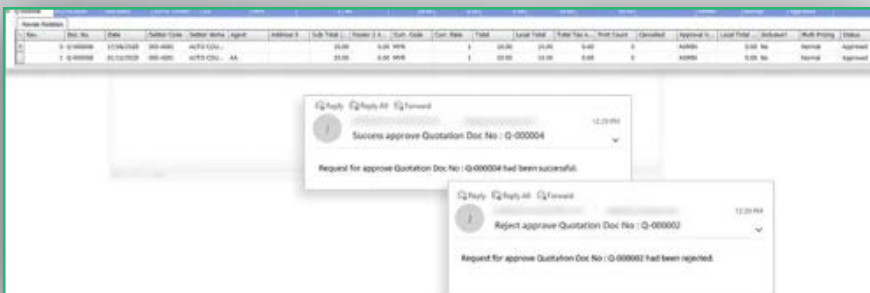
## STOCK DISASSEMBLY

Opposed to stock assembly that build a new product item by consuming several other items (parts), this Stock Disassembly allows you to break a product item into multiple items (components), at the same time keep tracks of costing and quantities. E.g. big jumbo roll of paper cut into different wide of paper roll, a whole chicken to different parts of chicken...

Item Code	Location	Description	Further...	UOM Rate	Qty	Cost Fraction %	Item Cost	Overhead ...	SubTotal
MOTHERBOARD	HQ	MOTHERBOARD	---	1	1	25	320	0	320
POWER SUPPLY	HQ	POWER SUPPLY	---	1	1	5	80	0	80
CASING	HQ	CASING	---	1	1	5	80	0	80
CPU FAN	HQ	CPU FAN	---	1	1	5	80	0	80
HARDISK	HQ	HARDISK	---	1	1	15	160	0	160
NETWORK CARD	HQ	NETWORK CARD	---	1	1	15	160	0	160
GRAPHIC CARD	HQ	GRAPHIC CARD	---	1	1	15	240	0	240
PROCESSOR	HQ	PROCESSOR	---	1	1	25	320	0	320
RAM	HQ	RAM	---	1	2	15	80	0	160

## ADVANCED QUOTATION

Better internal control before sending out sales quotations/proposals. You may set stricter approval process before finalising a quotation, keeping historical records of all revised versions, and sending alerting email on action required/approval/rejection.





**auto**count<sup>®</sup>

# ACCOUNTING

Perfectly Intergrated Financial  
and Business Automation



Complete Solution  
& Fully Integrated  
Windows like  
tiles view



Personalization,  
Customizable files,  
layout and reports



Instant Messaging  
Using Whatsapp to  
send invoices,  
quotations and more

# Perfectly Intergrated Financial and Business Automation



## Complete Solution & fully Integrated

Complete solutions which covers all essential accounting needs with flexibility of packages and modules to suits different company requirements.



## Powerful Pricing Setup & Control

Support up to 6 levels of pricing & discounts including multicurrency discount, along with selling price control & Multi-Dimensional Price Book Module.

## Security and Access Rights



Determined each users' access rights for maximum data protection and automatic data backup scheduling to ensure data security.



## Flexibility in Reporting

Intelligently equipped with dozens of analysis in each core modules with report customization feature and ability to convert into PDF, Excel & CSV reporting.



## Network and Internet Environment

Access data and operate the system from anywhere at anytime via internet connection, as long as the hosting server is live.

## Scalable & Extensible



Enabling software system upgrade along with business growth and expansion. Fully intergrable between AutoCount Accounting, Point-of-Sale solution and other AutoCount Plugins.

# autocount<sup>®</sup>

# POS

Retail POS software that helps you provide outstanding service



Fully Integrated  
With AutoCount  
Accounting System



eDashboard App  
Track sales  
performance



Mobile Payment  
Support various  
e-Wallet

# Everything You Need for Retail in One POS System

AutoCount POS 5.0 is mobile payment enabled to boost retail sales. We help retail business grow by providing a holistic Point of Sale solution.



## Astonishing Front-End Features

Beside core features and reports, you may customize the system to meet your unique requirements of operation and access to eDashboard via mobile app.



## Comprehensive Backend System

Comes with complete purchase, sales and inventory modules helps streamline your retail business process.



## Better Managed Ordering Process

Easy to use and practical interface for retailers who accept ordering and deposit before delivery.



## Easily Manage Prices, Discount & Promotions

Pricing matter is crucial in retail business. You may setting up different level of prices, discounts memberships, seasonal or happy hour discount for specific promotion.



## Effective Chain Store Management

From standalone to multi outlets, from single counter to numerous cashiers, the system is flexible enough to handle them all well.



## Cloud-Based eDashboard App

Monitor outlets sales performance by ranking and amount from wherever you are, at anytime of the day.



## Maintain Strong Ties With Valued Customers

Rewarding scheme and better manage valued customers relationship with Loyalty program, Membership system and more.



## AutoCount Specification

### Workstation PC

Component	Minimum Requirement
Operating System	Windows 8, Windows 10
Database Engine/Server	-
Net Framework	Microsoft .Net Framework 4.6.1
Processor	Intel Core i3 processors
RAM (Memory)	2GB
Storage Space	1 GB for application
Local Area Network	100 Mbps
Internet	1 Mbps (For License Validation)

## Server

Component	Minimum Requirement
Operating System	Windows 8, Windows 10, Windows Server 2012, Windows Server 2012 R2
Database Engine/Server	Microsoft SQL Server 2012 or higher
Net Framework	Microsoft .Net Framework 4.6.1
Processor	Intel Core i5 Processors (Recommended i7 Processors)
RAM (Memory)	4 GB (Recommended 8 GB)
Storage Space	1 GB for application, 10 GB for database and working
Local Area Network	100 Mbps
Local Area Network	1 Mbps (For License Validation)





Compiled by Tech360 Fiji Ltd  
Laucala Bay, Suva- Fiji Islands  
Phone: 3300677 / 9994904  
Email: [info@tech360.com.fj](mailto:info@tech360.com.fj)  
[www.tech360.com.fj](http://www.tech360.com.fj)

